



HENAN JUNHANG

MECHANICAL SALES



<https://junhangmachinery.com>



+8615835165115





JUNHANG HEAVY MACHINERY/钧航重工

Your Trusted Partner for Heavy Duty Machinery/全球建筑和矿业项目的一体化解决方案

1.

Premium Machinery Supply & Solutions

We specialize in delivering high-performance, cost-effective construction machinery. Our extensive inventory includes heavy-duty excavators, wheel loaders, mobile cranes, and professional crushing equipment. Every unit undergoes a rigorous 50-point technical inspection to ensure maximum reliability and productivity in demanding environments such as mining, construction, and road building.

2.

Global Trade Expertise & After-sales

With over 14 years of professional experience, we provide seamless export services specifically for the Middle East, Africa, and South American markets. Our team manages the entire process from professional machine selection and customized refurbishment to complex international logistics and customs documentation. We guarantee transparent transactions and long-term spare parts support to keep your projects running without interruption.



MECHANICAL SALES



ABOUT US / 公司简介

Who We Are / 我们是谁

Henan Junhang Heavy Machinery Sales Co., Ltd. is a premier global supplier of heavy construction and mining equipment, headquartered in Henan, China. With over 14 years of specialized experience in the international trade of machinery, we provide one-stop procurement solutions for infrastructure projects worldwide.

河南钧航重工机械销售有限公司 是一家领先的重型工程与矿山设备全球供应商，总部位于中国河南。凭借超过 14 年的工程机械国际贸易专业经验，我们为 global 基础设施建设项目提供一站式采购解决方案。



MECHANICAL SALES



OUR EXPERTISE

Our Expertise / 核心优势

Diverse Product Line: From road maintenance (Chip Sealers) to heavy excavation (Excavators, Bulldozers) and mining (Mobile Crushers).

Quality Assurance: Partnered with world-class brands like XCMG, SANY, Zoomlion, and Liugong to ensure the highest standards of reliability.

Global Reach: Dedicated service to markets in the Middle East, Africa, South America, and Central Asia.

Professional Support: Expert technical consulting and efficient global logistics to ensure your projects stay on schedule.

多样化的产品线：从路面养护（碎石封层车）到重型挖掘（挖掘机、推土机）及矿山作业（移动破碎站）。

质量保证：与徐工、三一、中联重科、柳工等世界级品牌深度合作，确保设备高度可靠。

全球覆盖：专注于中东、非洲、南美及中亚市场。

专业支持：专家级技术咨询与高效的全球物流，确保您的工程进度无忧。





OUR VISION / 我们的愿景

To empower global infrastructure with high-performance Chinese machinery and provide exceptional value to our partners through integrity and expertise.

依托高性能的中国机械设备助力全球基础设施建设，通过诚信与专业为我们的合作伙伴创造卓越价值。



Contact Us +8615835165115





GLOBAL SUPPLY CHAIN

1.

Middle Eastern

Engineered for the Extreme: Powering Middle East Infrastructure.

Our machinery is specifically optimized for high-temperature and sandy environments. Featuring enhanced cooling systems and heavy-duty filtration, our fleet—including XCMG cranes and SANY excavators—ensures 24/7 reliability in the Gulf region. From Dubai's urban projects to Saudi Arabia's Neom development, Junhang Machinery is your cooling-efficient partner.

为极端环境而生：助力中东基建。我们的设备针对高温防沙进行了专项优化，配备加强型冷却系统，确保在海湾地区高效运转。

2.

Central Asia

Robust Solutions for Central Asia: Winter-Ready & Field-Proven.

Designed to withstand harsh winters and rugged terrains, Junhang Machinery provides pre-heated engines and cold-resistant hydraulic systems. With our strategic location in Henan, we offer rapid road and rail delivery to Kazakhstan, Uzbekistan, and beyond. We speak your language of efficiency and durability.

坚固的中亚方案：无惧严寒，实地验证。提供预热系统和耐寒液压装置，依托河南物流优势，实现快速陆运交付。

3.

African countries

The Hardest Working Machinery for Africa's Growth. We provide the most cost-effective and easy-to-maintain equipment for the African continent. Our machinery is selected for its robust structure and fuel adaptability, ensuring long life cycles even with limited local maintenance facilities. Whether it's road building in Kenya or mining in Nigeria, we deliver the power you can trust at a price that fits.

助力非洲增长，最勤恳的机械。我们提供最具性价比、易于维护的设备，结构坚固，适应当地燃油质量，是路桥建设和矿山开发的理想选择。



MECHANICAL SALES



PLEASE CONTACT LEON

Position:
General Manager of Foreign Trade



Phone Number :
+8615835165115



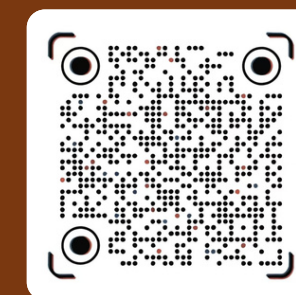
Website :
<https://junhangmachinery.com>



Email Address :
zhangweibin115@gmail.com



WhatsApp



TikTok



WeChat



PRODUCT CATALOG



- 1 High-Performance Crawler Excavators (挖掘机)**
- 2 Heavy Duty Wheel Loaders (装载机)**
- 3 Crawler Bulldozers (推土机)**
- 4 Versatile Backhoe Excavators / Loaders (反铲挖掘机装载机)**
- 5 Heavy Duty Truck Cranes (起重机)**
- 6 15-50 Ton Heavy Duty Forklifts (重型叉车)**
- 7 Synchronous Chip Sealer Truck (同步碎石封层车)**
- 8 Heavy Duty Vibratory Road Roller (压路机)**
- 9 Mobile Crushing & Screening Plant (移动破碎站)**
- 10 Heavy Duty Dump Trucks / Tippers (自卸车)**



EARTHMOVING & EXCAVATION / 土石方机械



High-Performance Crawler
Excavators (挖掘机)



Heavy Duty Wheel Loaders
(装载机)



Crawler Bulldozers (推土机)



Versatile Backhoe Excavators /
Loaders (反铲挖掘机装载机)



HIGH-PERFORMANCE CRAWLER EXCAVATORS (挖掘机)

Key selling points:

Fuel Efficiency: Advanced hydraulic systems for maximum power with low fuel consumption.

Stability: Reinforced chassis for mining and heavy-duty digging.

Models: Full range of excavators from 6 tons to 100 tons.

核心卖点：

燃油效率：先进的液压系统，在保证最大动力的同时降低油耗。

稳定性：加强型底盘，适用于矿山和重型挖掘作业。

机型：全系列6吨-100吨挖掘机。



HEAVY DUTY WHEEL LOADERS (装载机)

Core Selling Points:

Bucket Capacity: Designed for high-volume material handling.

Fast Cycle Times: Optimized power-to-weight ratio for rapid loading.

核心卖点：

铲斗容量：专为大容量物料搬运而设计。

快速循环：优化的功率重量比，实现快速装载。



MECHANICAL SALES



CRAWLER BULLDOZERS (推土机)

Core Selling Points:

Extreme Traction: High-torque engines for grading and site preparation.

Environment Adaptation: Specialized blades for desert or rocky terrains.

核心卖点：

超强牵引力：高扭矩发动机，适用于平整土地和场地准备。

环境适应性：专为沙漠或岩石地形设计的专用铲刀。





VERSATILE BACKHOE EXCAVATORS / LOADERS 反铲挖掘机装载机

Designed for heavy-duty excavation, trenching, and loading in construction, mining, and infrastructure projects.

Key Selling Points:

The backhoe design provides maximum leverage, allowing the operator to penetrate hard soil and rocky terrain with ease. Perfect for deep trenching and foundation work below the ground level with high accuracy. Optimized for rapid cycle times, enabling quick soil removal and truck loading to keep projects on schedule.

三大核心卖点 (Key Selling Points)

Powerful Breakout Force (强劲的掘起力): 反铲设计提供了最大的杠杆作用, 使操作者能够轻松穿透硬土和岩石地形。

Precision and Depth (精准度与挖掘深度): 非常适合地面以下的深沟开挖和基础作业, 具有极高的精准度。

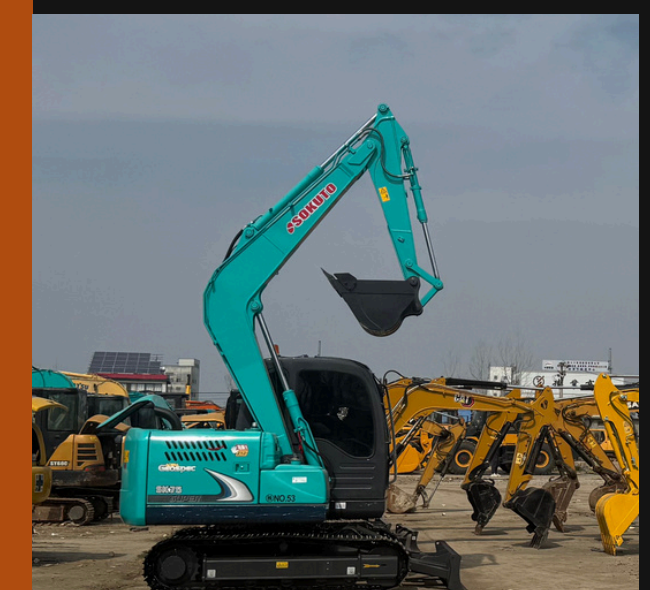
High Efficiency (高效装载): 优化了作业循环时间, 实现快速排土和卡车装载, 确保项目按时推进。





MECHANICAL SALES

PRODUCT SHOWCASE





A general term for mechanical equipment used for handling, loading and unloading, transportation and positioning of goods, which is indispensable in engineering construction, factory production and warehousing logistics.

LIFTING & LOGISTICS (吊装与物流机械)

01

Heavy Duty Truck Cranes (起重机)

Engineering the impossible: Turning heavy challenges into effortless heights.

02

15-50 Ton Heavy Duty Forklifts (重型叉车)

The iron giant of logistics, moving the unmovable with absolute power and precision.





MECHANICAL SALES

HEAVY DUTY TRUCK CRANES (起重机)

Core Selling Points:

Lifting Reach: Exceptional boom length and stability at high altitudes.

Safety First: Multi-redundant safety monitoring systems.

Hot Models: 25T to 100T
Sany/XCMG/Zoomlion cranes.

核心卖点:

超长起升高度: 卓越的臂长和高空稳定性。

安全至上: 多重冗余安全监控系统。

热门机型: 三一/徐工/中联重科25吨至100吨起重机。





MECHANICAL SALES

Key selling points:

High Torque: Equipped with Cummins/Weichai engines for massive power at low speeds.

Heavy-Duty Chassis: Ultra-stable design ensuring safe handling of 15T-50T oversized loads.

Smart Hydraulic: Load-sensing technology for smooth, millimetric precision handling.

Real-time Monitoring: Automatic overload protection and 360° visibility for zero-accident operation.

Durability: Reinforced mast and wet-disc braking system for 24/7 high-intensity work.

Low Maintenance: High-strength components with long service intervals, reducing operational costs.

核心卖点:

Extreme Lifting Power (极致起重性能)

高扭矩： 配备 **Cummins/Weichai** 发动机，低速时输出巨大动力。

重型底盘： 超稳定设计确保安全处理 **15T 至 50** 吨超大载荷。

Precision & Safety Control (精准与安全管控)

智能液压： 载荷感应技术，实现平稳、毫米级的精密操作。

实时监控： 自动超载保护和 **360°** 视野，实现零事故运行。

Built for Harsh Environments (专为严苛工况而生)

耐用性： 加固桅杆和湿式刹车制动系统，适用于全天候高强度作业。

低维护： 高强度部件，维护周期长，降低运营成本。



5-50 TON HEAVY DUTY FORKLIFTS (重型叉车)



MECHANICAL SALES



PRODUCT SHOWCASE



<https://junhangmachinery.com>



ROAD CONSTRUCTION & MAINTENANCE (路面机械)

Turning rough landscapes into smooth paths of progress, we pave the way for a connected future. With 14 years of expertise, we ensure that every mile you build is backed by world-class reliability and support.

Synchronous Chip Sealer Truck (同步碎石封层车)

Heavy Duty Vibratory Road Roller (压路机)



+8615835165115



MECHANICAL SALES



01

Core Selling Points:

Dual-Function: Simultaneous asphalt spraying and aggregate spreading.

Precision: Intelligent PLC control system for accurate distribution rates.

Versatility: Suitable for various asphalt types (emulsified, modified, etc.).

Application: High-grade road maintenance and surface dressing.

02

核心卖点:

双重功能: 同时进行沥青喷洒和集料撒布。

精准: 智能PLC控制系统, 实现精准的撒布量。

通用性: 适用于各种沥青类型 (乳化沥青、改性沥青等)。

应用范围: 高档道路养护和表面处理。

Vision

SYNCHRONOUS CHIP SEALER TRUCK(同步碎石封层车)

<https://junhangmachinery.com>

HEAVY DUTY VIBRATORY ROAD ROLLER (压路机)

Core Selling Points:

High Compaction: Superior excitation force for deep layer density.

Smart Control: Real-time monitoring of compaction frequency.

Durability: Heavy-duty drum designed for 24/7 road construction.

核心卖点:

高压实度: 强大的激振力, 实现深层压实。

智能控制: 实时监测压实频率。

耐用性: 重型滚筒设计, 适用于全天候道路施工。





MECHANICAL SALES

PRODUCT
SHOWCASE





MINING & TRANSPORT (矿山与运输机械)

MOBILE CRUSHING & SCREENING PLANT (移动破碎站)

A powerhouse on tracks, our Mobile Crushing Plant brings massive crushing capability directly to the rock. It redefines efficiency by eliminating costly material transport and instantly transforming raw materials into valuable assets on-site.

HEAVY DUTY DUMP TRUCKS / TIPPERS (自卸车)

The Dump Truck is the vital pulse of any project, engineered to carry massive burdens across the most unforgiving terrains. With a high-strength chassis and powerful hydraulics, it ensures materials flow and progress never stops, providing the rugged backbone your fleet needs.





MECHANICAL SALES

MOBILE CRUSHING & SCREENING PLANT (移动破碎站)

<https://junhangmachinery.com>

Core Selling Points:

Plug-and-Play: Rapid deployment without the need for fixed foundations.
Integrated Design: Crusher, feeder, and screen on a single chassis.
Application: Granite, basalt, and construction waste recycling.

核心卖点：

即插即用：无需固定基础，即可快速部署。
一体化设计：破碎机、给料机和筛分机集成于同一底盘上。
应用领域：花岗岩、玄武岩和建筑垃圾回收利用。





MECHANICAL SALES

HEAVY DUTY DUMP TRUCKS / TIPPERS (自卸车)

Core Selling Points:

Reliability: Featuring the world-renowned HOWO/SHACMAN chassis.

Payload: High-tensile steel bodies for maximum haulage in mines.

核心卖点:

可靠性: 采用世界知名的豪沃/陕汽底盘。

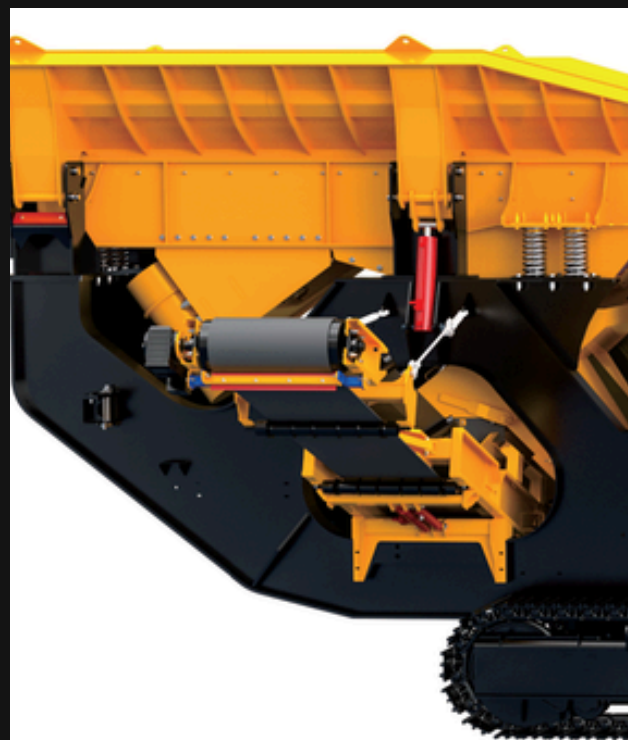
有效载荷: 高强度钢车身，确保矿山运输能力最大化。

<https://junhangmachinery.com>





MECHANICAL SALES



 <https://junhangmachinery.com>

PRODUCT SHOWCASE



MECHANICAL SALES

THANK YOU.

*Building a Stronger Future Together
Thank You for Your Trust!*

We look forward to powering your next project with our 14+ years of expertise.



+8615835165115



<https://junhangmachinery.com>



zhangweibin115@gmail.com